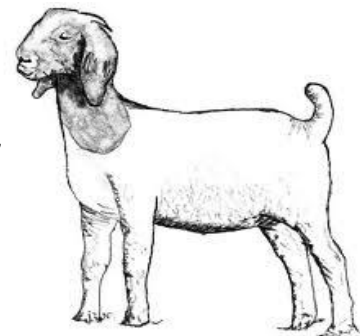


LAKE TRAVIS FFA



LAMB & GOAT SHOW

8th Annual Lake Travis FFA Lamb & Goat Show
Lake Travis High School Ag Science Center
November 2, 2019
Judge – TBA

These are **not** sanctioned shows.

ENTRY FEES - \$ 20.00 (no pre-pays/cash only)

Showmanship \$5 per exhibitor (if you choose to enter Showmanship Category)

Exhibitor **MUST** have shown in a class to participate in showmanship

Listed below is general information for the Lamb & Goat Shows

- No minimum or maximum weights (OFFICIAL WEIGH-IN)
- No shearing, clipping, or blow-drying allowed on grounds. Washing & towel drying okay.
- No painting, powdering, or artificial coloring allowed.
- Slick shorn above the knees & hocks.
- Trailer/Cage show. No pens.
- **GOATS**
 - Wethers and Does
 - Halters or collars may be used.
- **LAMBS**
 - Wethers and Ewes.

Concession Stand on site.

Schedule

7:00 AM – 9:00 AM Check-in
10:00 AM Goat Show (5 weight divisions)
 Sr. Goat Showmanship (9th – 12th grade)
 Jr. Goat Showmanship (3rd – 8th grade)
(Goats will release after showing)
30 MINUTE BREAK FOR LUNCH –
 Lamb Show (Hair Class, Southdown, Fine Wool, Cross, Medium Wool)
 Sr. Lamb Showmanship (9th – 12th grade)
 Jr. Lamb Showmanship (3rd – 8th grade)
(Lambs will release after showing)

Awards

Goats

- ❖ Division Champs –
- ❖ Reserve Division Champs –
- ❖ Grand Champion Meat Goat –
- ❖ Reserve Champion Meat Goat –

Lambs

- ❖ Breed Champions –
- ❖ Reserve Breed Champions –
- ❖ Grand Champion Lamb –
- ❖ Reserve Champion Lamb –

Showmanship (cash payback-%tage of participants)

- ❖ Grand Showmanship (Jr. & Sr. Division) -
- ❖ Reserve Champion (Jr. & Sr. Division) -

The Lake Travis Ag Science Center is located behind the High School. Follow the signs and take the road beside the football stadium, baseball field, and practice stadium.

FOR MORE INFORMATION CONTACT:

Lake Travis High School Ag Science Program
FFA Advisors

Kelly White – whitek@ltidschools.org 512-533-6089

Perry White – whitep@ltidschools.org 512-533-5921

Taylor Eurich – euricht@ltidschools.org 512-533-7677